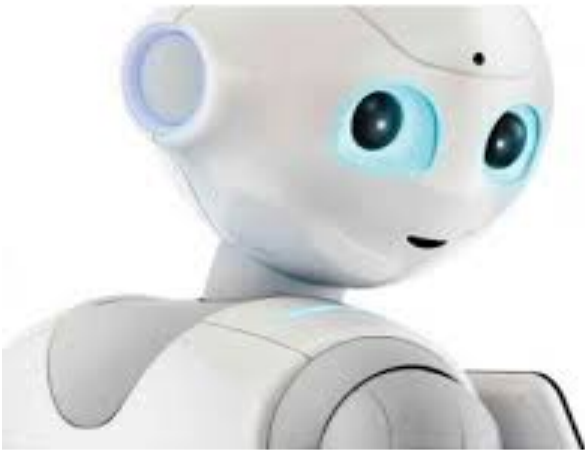


DMAG™

Cuts Effort, Time and Cost by THIRD
for S/4 HANA Green Field Migrations



DMAG™ 4 Greenfield Migrations

DMAG provides compelling value by offering rapid Data Conversions and Migrations from the Legacy systems to S/4 HANA for Master Data, Transactional Data and Configuration Data using Robotic Data Staging, Data Dialysis, Data Cleansing, Data Mapping and Transformation.

Data Migration, Audit and Governance (DMAG) - S/4 HANA® Greenfield Migration

DMAG automates data migration process from Oracle, Microsoft, SAP and non-SAP systems. It can convert data from Microsoft Great plains, MS Dynamics, Oracle, JD Edwards and SAP systems, Stage the data, Cleanse and scrub it, transform and migrate it into S/4 HANA. It is used for “Like to Like” migrations for ECC to ECC, ECC to S/4 HANA and heterogenous migrations as well from Non SAP systems mentioned above. It helps with simplifying the landscape, technology optimization, and produces high data quality via Robotic conversion, mapping and loading. It is business rules based, incorporates industry standards and changed fields/ data elements, and incorporates new data Model from non-SAP to S/4 HANA. It helps with collapsing multiple SAP systems (ECCs) into single S/4 HANA instance with Standard foot-print, Simplified landscape and is Business process enabled.

DMAG™ - ‘Get Data Right the First Time’

Data Management is the most challenging area for any Enterprise Data implementation. Visionsoft DMAG™ product mitigates the Data migration risks and addresses the business challenges by preserving high data quality across the business processes, Below is the scope of Migration and the Risks and Issues addressed using DMAG.

Data Migration, Audit, and Governance Scope:

- *Master Data: Customers, Vendors, Materials, Cost Centers, Profit Centers, G/L, & Org Entities*
- *Transactional Data: G/L Balances, Inventory Balances, Assets Balances, Purchase Orders & Sales*

Migration Risks

- *Data is adequate for legacy systems, but not for SAP*

- *Lack of accurate documentation for legacy systems*
- *Poor data quality in source systems*
- *Errors detected late in project lifecycle leads to re-work and delays*
- *Data management requirements draw resources from subsequent rollouts*

Process Issues

- *Unable to Ship Product*
- *Unable to cut a PO*
- *Unable to Manufacture material*
- *Cannot Plan or Sell*
- *No Warehouse Management*
- *Cannot Release Planned Orders*
- *Incorrect pricing of goods and services*

Object Issues

- *Duplicate Vendor. Confusion*
- *Incorrect Address, failed delivery*
- *No Tax Jurisdiction, Incorrect Tax Calculation*
- *Unable to call supplier due to missing or incomplete phone number*

*Our approach to Data Migration and Governance is **Get data right “the first time”, Start Early and Build a Sustainable Process with** our expertise in Data, Process, Custom Code, and Security areas i.e. Sweet Spots.*

- *Start gathering, analyzing and cleansing legacy data before the start of the design phase*
- *Clean Data in legacy Systems before it is Migrated to S/4 HANA*
- *Assess Maturity of Business Processes*
- *Use DMAG™ to rapidly automate the source to target mapping*
- *Use rapid generator to automate data extraction from non-SAP or SAP systems*
- *Load business ready data to support testing*
- *DATA MIGRATION from non-SAP to SAP, ECC to ECC and ECC to S/4 HANA*
- *Balance three strategic variables – Complexity , Speed and Cost*

Data and Configuration Migration & Governance - S/4 HANA® Greenfield Migration

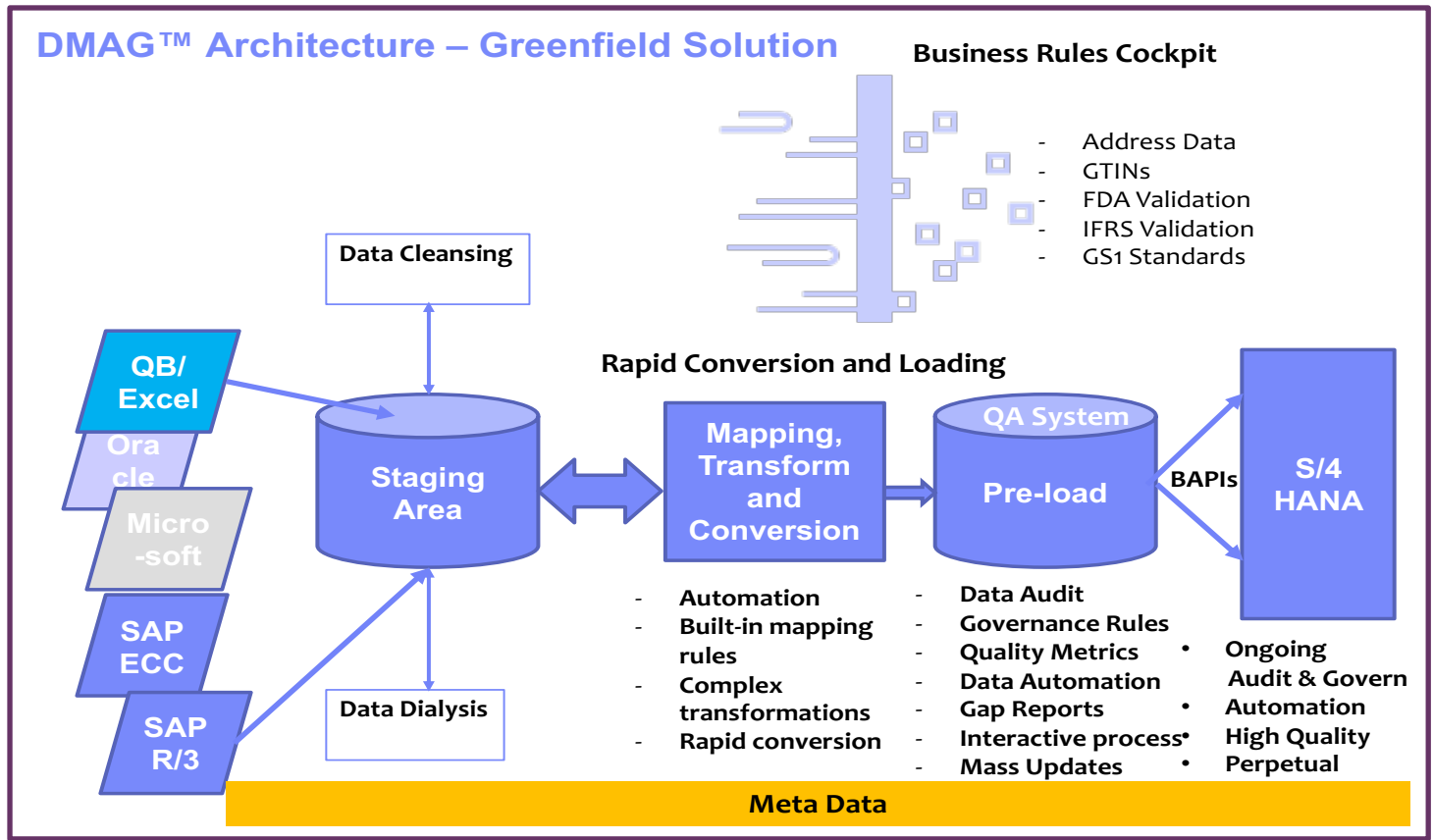


Figure 1 - DMAG Solution

DMAG has capability to source the data from legacy systems: QB, Excel, Oracle, Microsoft, SAP ECC and SAP R/3 systems. It gets the data into a staging area, validates the records, formats, structures and ensures that all the expected data from legacy is transitioned. It stores the data in the Staging area, conduct Data Dialysis, Cleanse and Scrub it and transform it into useable formats. Then, the data is transformed and mapped into S/4 formats and structures via Automation, Built-in Mapping Rules and Complex Transformations using Rapid Conversion and Loading. On top of the transformed Data, Data Audit is conducted, validations performed using Industry rule sets, GTINs and Regulations such IFRS, and the validation reports are produced. The Validation reports are assessed and Quality Metrics are delivered for enhancing and improvement. After 2-3 dry runs, the data is loaded into Production for Go-live.

Value Proposition

DMAG cuts your Master & Transactional Data and Configuration Data Effort, Time and Cost by 60%. DMAG automates the Data Mapping, Data Transformations into new data elements in S/4, and Automates the Data Resolutions. In addition, for the new data model and Business Rule inconsistencies, it provides a Guided framework for the Data Stewards to update the Master Data and Configuration Data. Further, it serves as a good tool for perpetual data quality check and data dialysis to measure accuracy and quality of the data proactively and take appropriate actions to cleanse the data so the data is 100% error free.

What Does DMAG save?

To quantify the savings, as a case in point with our client(s), following are the key resource and timeline savings:

Our Value Proposition

Our Migratum solution establishes an industrialized approach for migrating voluminous legacy data:

- 1. Reduces the risk for Enterprise implementations and support by delivering a proven methodology for data migration – Reduces Effort, cost and Time by 60%*
- 2. **Automates and speeds up** the migration by 60%*
- 3. Proactively service customer (Business Party) issues and address them before they become critical*
- 4. Improves business process execution by increasing information accuracy*
- 5. Delivers a repeatable and reusable infrastructure that can be leveraged for multiple SAP deployments and for ongoing enterprise integration, quality and governance*
- 6. Finally, using our DMAG toolset, the data migration and cleansing occurs 30-40% faster as compared to traditional method of data migration for any implementation*

For More Information or to request a DMAG demo, please contact

VISIONSFT GLOBAL
186, PRINCETON HIGHST TOWN ROAD, PRINCETON, NJ-08550
INFO@VISIONSOFT.GLOBAL
+1 609 759 2967